



Samtrade FX Metatrader 4 (MT4) Starter Guide for Mac OS



Table of Contents

Installation	3
Metatrader 4 Overview.....	8
Change Language	9
Open Demo Account	10
Login to Demo Account	15
Login to Live Account	17



Installation

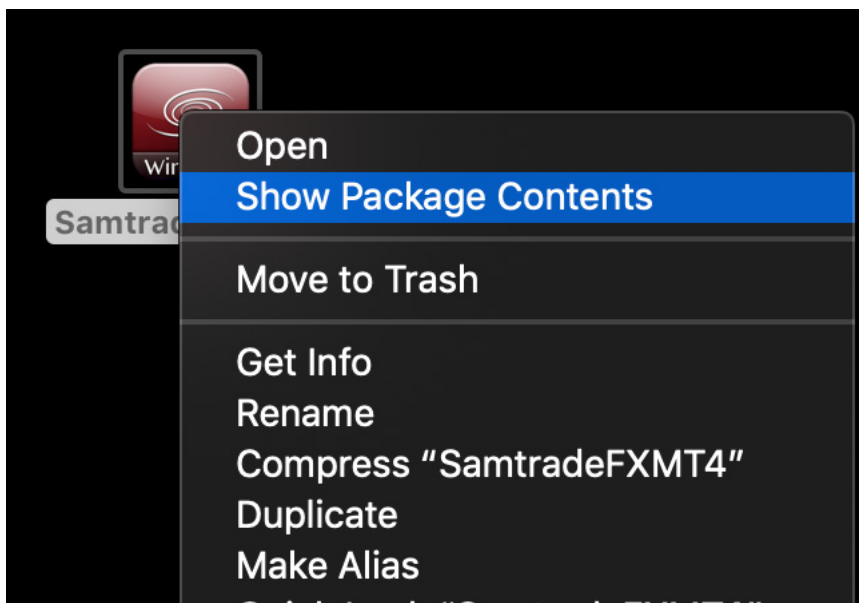
1. Download Samtrade FX's MetaTrader 4 Client Terminal platform from Samtrade FX website or by clicking the link below:

[Download MetaTrader 4 for Mac OS](#)

2. Double Click on the **SamtradeFXMT4.dmg** file.
3. Drag the installer to desktop.



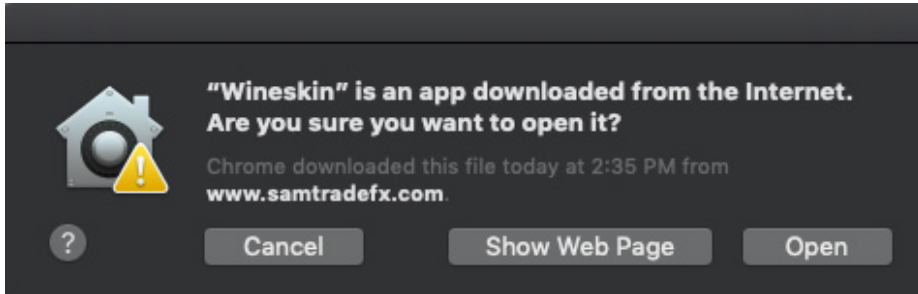
4. Right click and select "**Show Package Content**"





Installation

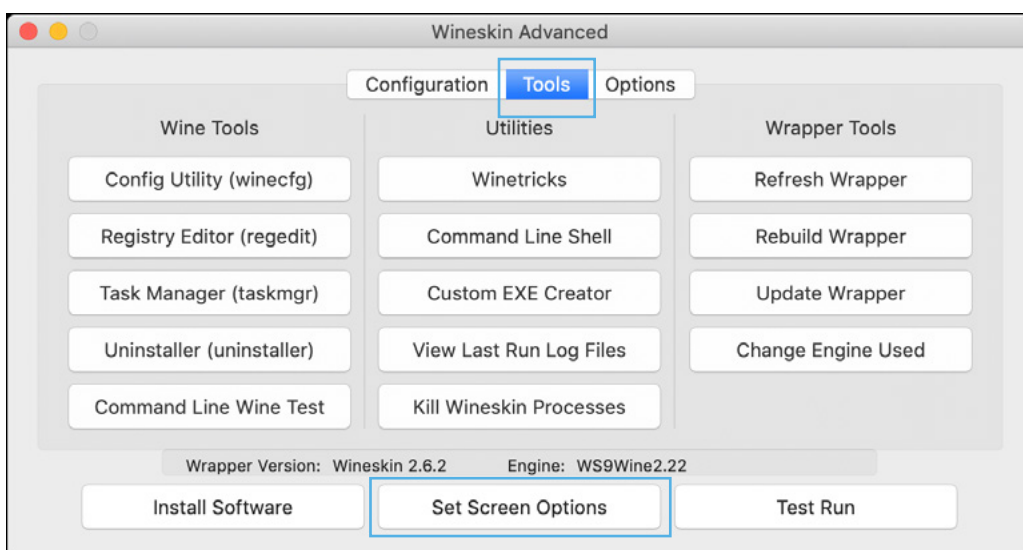
5. Select “**Open**” when prompted.



6. Double click on the WineSkin Icon and select “**Advanced**”



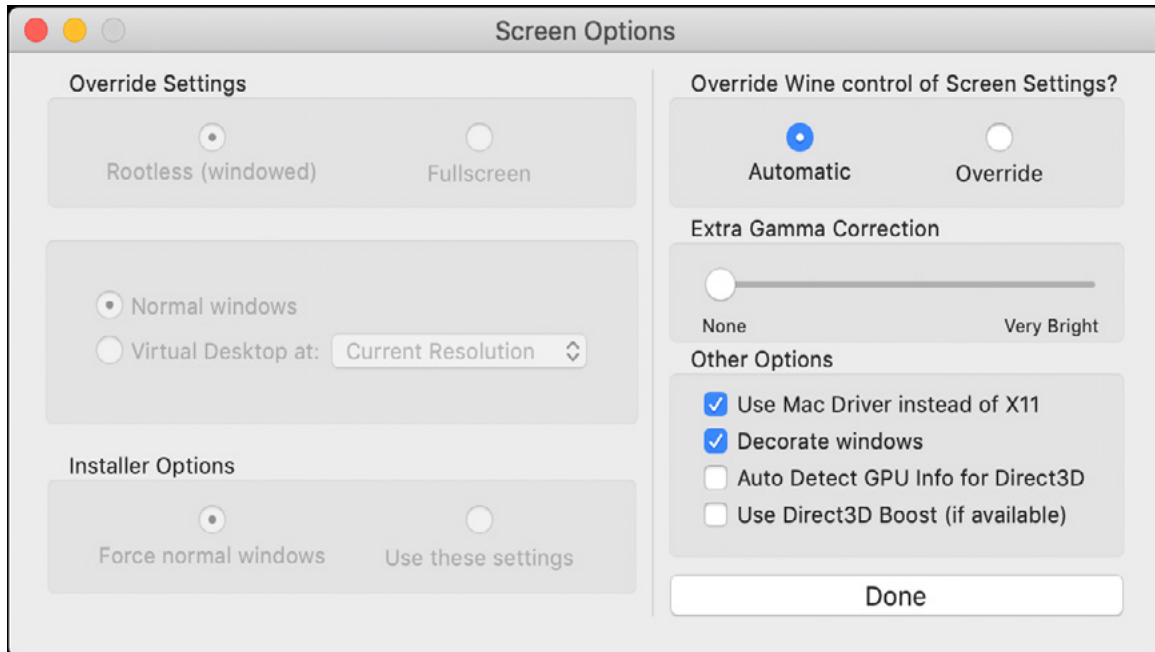
7. Go to “**Tools**” tab and select “**Set Screen Options**”



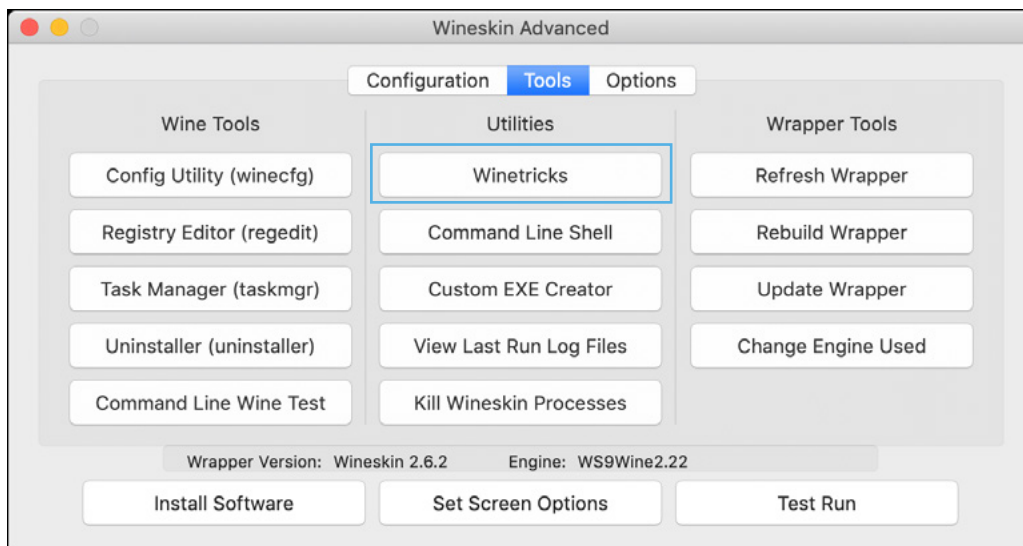


Installation

8. Under “**Other Options**”, select “**Use Mac Driver instead of X11**” and “**Decorate windows**”. Deselect “**Auto Detect GPU Info for Direct3D**” and click “**Done**”.



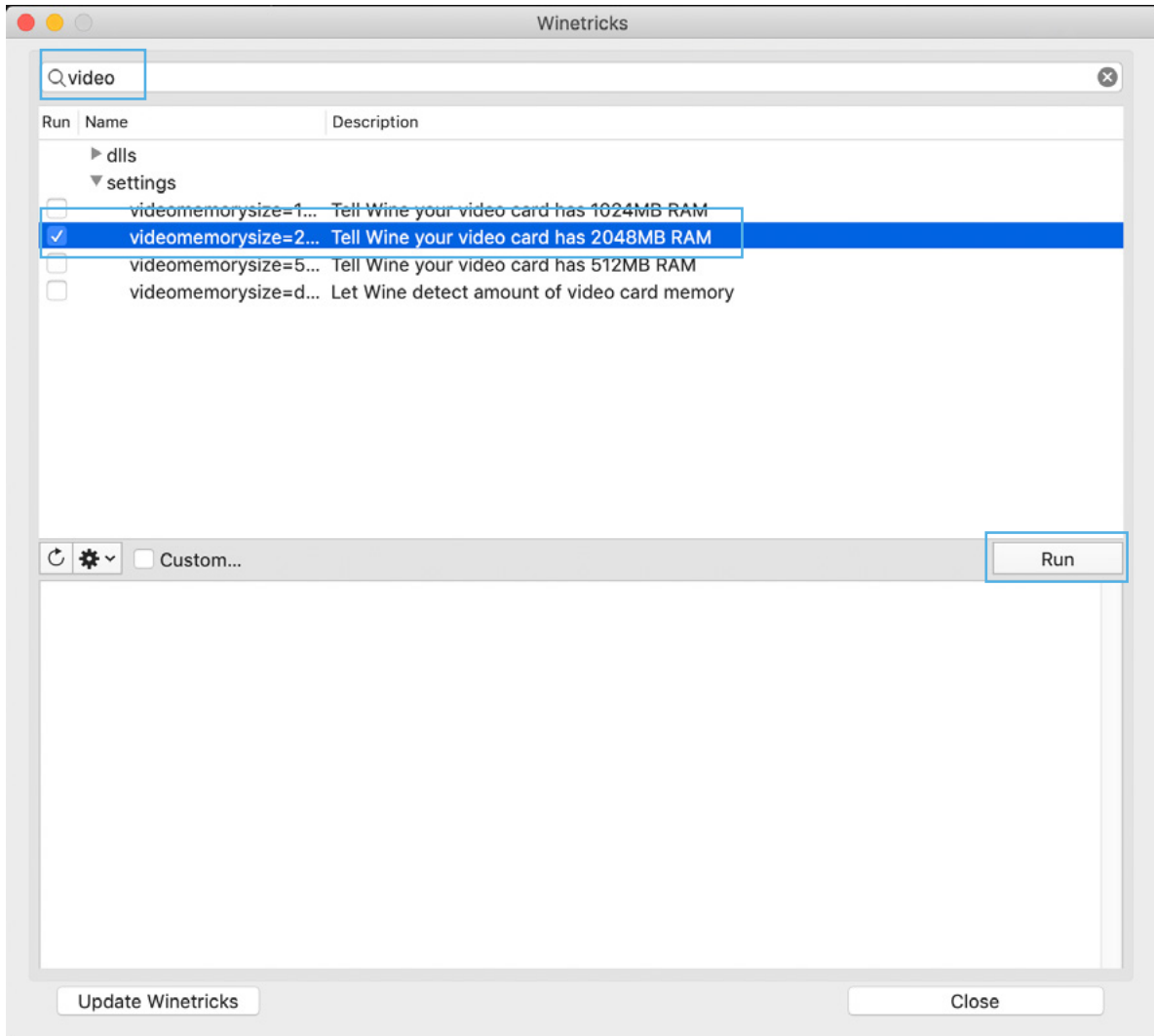
9. Select “**Winetricks**” under **Utilities**.





Installation

10. Search for “**video**” and expand the “**settings**” configuration. Select “**videomemorysize=2048**” and click **Run**.

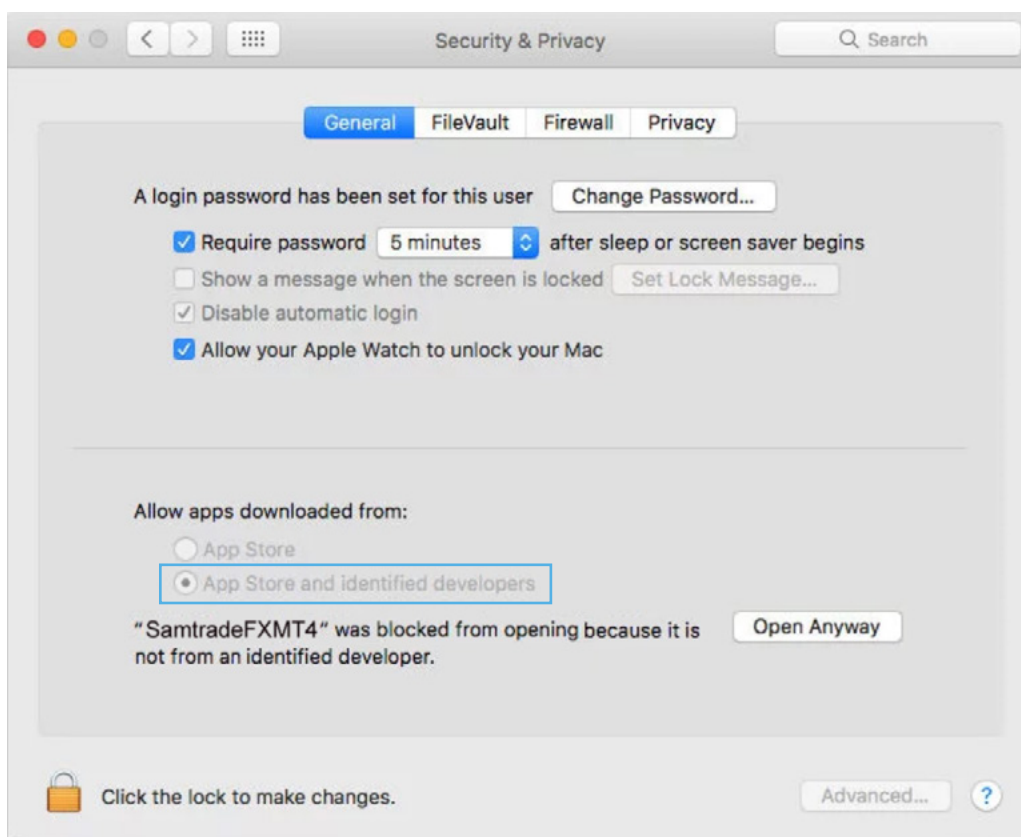




Installation

11. Once completed, click “**Close**”.
12. Close the Wineskin Advanced window.
13. Now double click on the **SamtradeFXMT4 icon** on your desktop and the SamtradeFXMT4 will be installed.

Do note that you may need to change your Security settings under the “**Security & Privacy**” system preference to allow the installation.





Metatrader 4 (MT4) Overview

Here is the overview of what the MT4 platform look like.

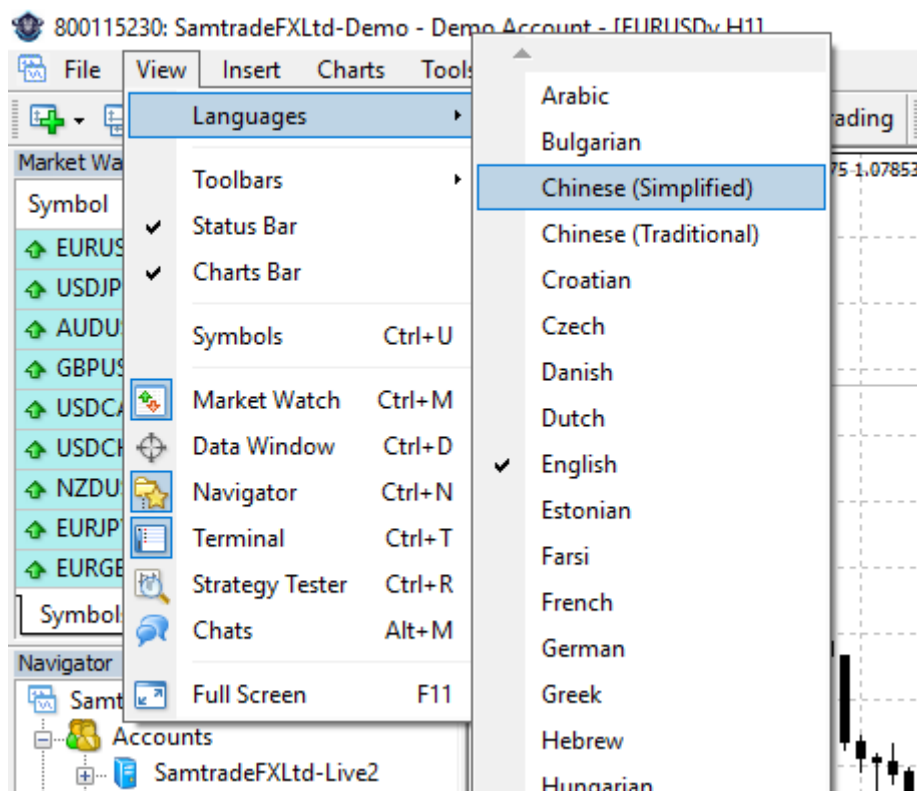
- **Main menu** (access to the program menu and settings).
- **Toolbars** (quick access to the program features and settings)
- **Market Watch** window (real-time quotes for the specified instruments).
- **Navigator** window (quick access to all your accounts, indicators, expert advisors)
- **Terminal** window (quick access to the trading and account history, list of open positions and placed orders, client terminal log-file and internal mailbox).



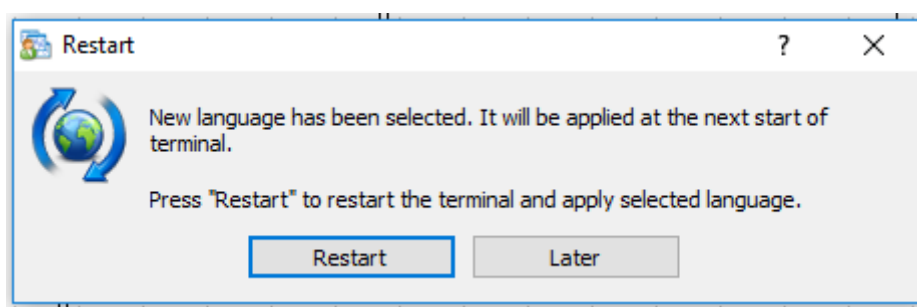


Change Language

- You can change the language of the MT4 platform by clicking on **View → Languages → Select the language you want**



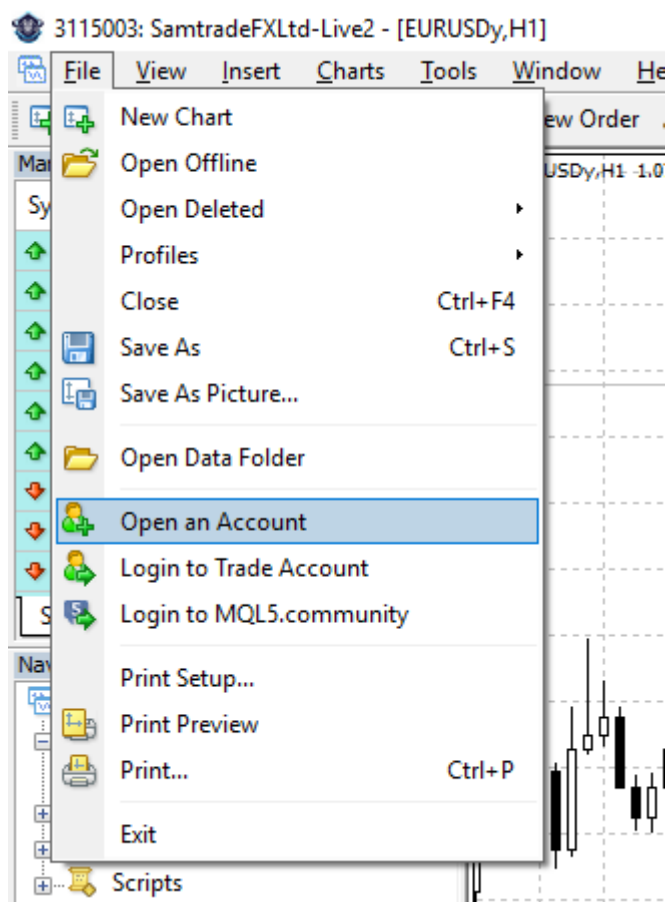
- Press **Restart** to apply the selected language





Open Demo Account

- Client is able to create a Demo Account by clicking on **File → Open an Account**








Open Demo Account

- Select **Samtrade-Demo** server and click **Next**.

Trading Servers

Select a more suitable trading server:

Address	Company	Ping
 Samtrade-Demo	Samtrade FX Ltd	167.43 ms
 Samtrade-Live	Samtrade FX Ltd	164.71 ms
 add new broker like "BrokerName" or address mt.company.com:443		



Scan

Next >

Cancel



Open Demo Account

- Select **New demo account** server and click **Next**.

Open an Account

?

×

Select account type
To start working an account is required:

To start working, you need a valid trade account. If you don't have it, you can create a demo or real account by selecting the corresponding option below and pressing "Next":

☐ Existing trade account

Login:

Password: ☒ Save password

Server: Samtrade-Demo

☒ New demo account

☐ New real account

< Back

Next >

Cancel



Open Demo Account

- Fill in the required information
- Check the box “**I agree to subscribe to your newsletters**” and click **Next**.

The screenshot shows a window titled "Open an Account" with a close button (X) and a help button (?). Below the title is the section "Personal details" with the instruction "To open an account, please fill out all the following fields:". The form contains the following fields:

- Name: A text input field containing "Your Name".
- E-Mail: A text input field containing "youremail@gmail.com".
- Phone: A dropdown menu showing "+65" and a text input field containing "91234567".
- Account type: A dropdown menu showing "SFX".
- Deposit: A dropdown menu showing "100000" and a text input field showing "USD".
- Leverage: A dropdown menu showing "1:100".
- Agreement: A checked checkbox followed by the text "I agree to subscribe to your newsletters".

At the bottom of the form are three buttons: "< Back", "Next >" (highlighted with a blue border), and "Cancel".



Open Demo Account

- You will receive your **login and password** to trade on our demo account
- Click **Finish** to gain access to your demo account.
- Your demo account platform will start up and displays the main trading window.

Open an Account

?

×

Registration
Wait a little, please

Name: Your Name

Account Type: demoWL_ST (1:100)

Deposit: 100000

Server: Samtrade-Demo

Login: **232424**

Password: **4solpru**

Investor: **ub8sgur** (read only password)

Please keep your username and passwords in a safe place.

< Back

Finish

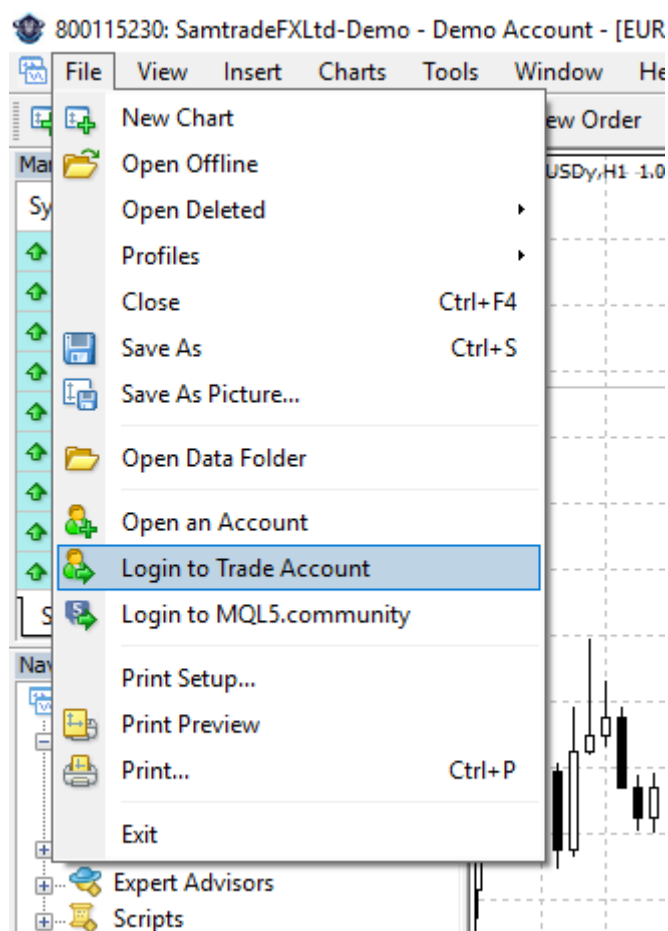
Cancel



Login to Demo Account

- To login to your demo MT4 Account, click on

File → Login to Trade Account.






Login to Demo Account

- Key in your MT4 **Login ID** and **Password** that was provided to you.
- Select Server "**Samtrade-Demo**"
- Click on "**Login**" to login to your account.

Happy Trading!

Samtrade MetaTrader 4 Terminal ? X



Authorization allows to get access to the trade account

Login:

Password:

Server:

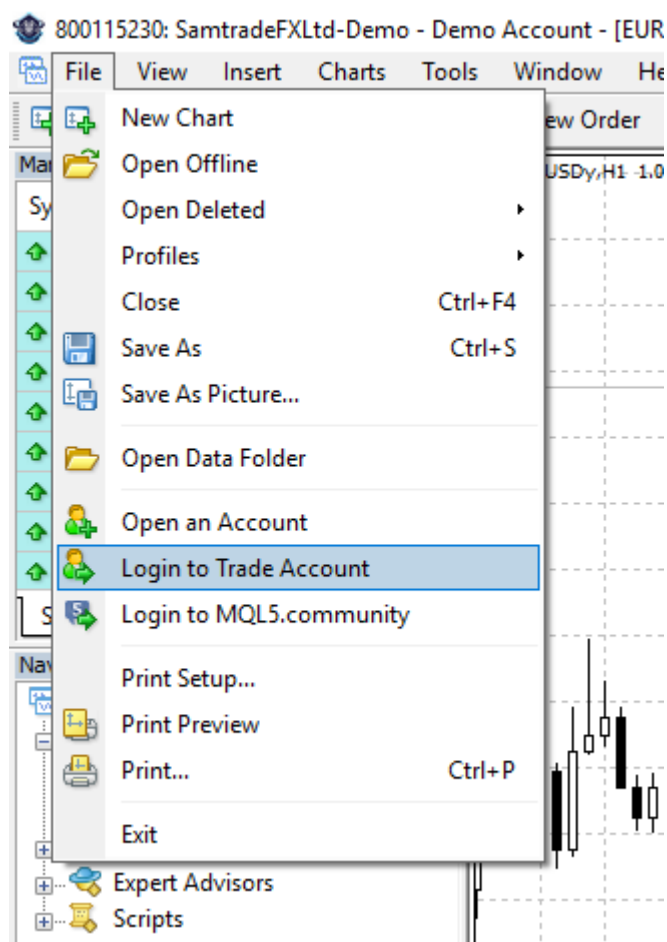
☒ Save account information



Login to Live Account

- To login to your Live MT4 Account, click on

File → Login to Trade Account.





Login to Live Account

- Key in your MT4 **Login ID** and **Password** that was provided to you.
- Select Server “**Samtrade-Live**”
- Click on “**Login**” to login to your account.

Happy Trading!

The screenshot shows the 'Samtrade MetaTrader 4 Terminal' window. It features a title bar with a question mark and a close button. Below the title bar is a grey panel with a yellow padlock and key icon on the left. To the right of the icon, the text reads 'Authorization allows to get access to the trade account'. Below this text are three input fields: 'Login:' with the value '303141', 'Password:' with ten black dots, and 'Server:' with the value 'Samtrade-Live'. A checkbox labeled 'Save account information' is checked. At the bottom of the panel are two buttons: 'Login' and 'Cancel'.